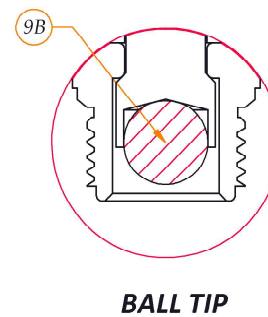
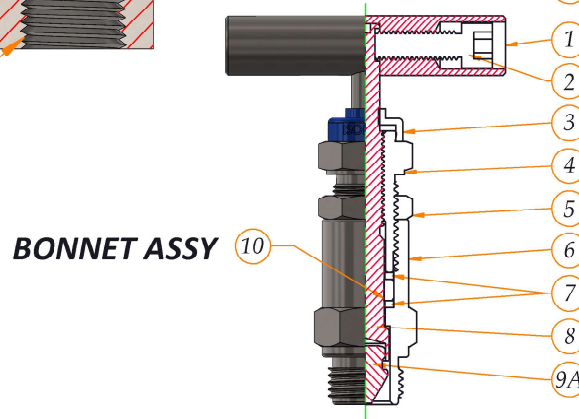
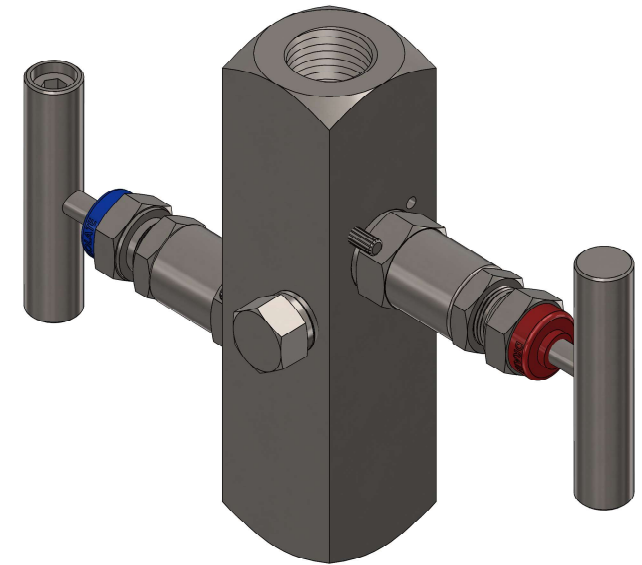
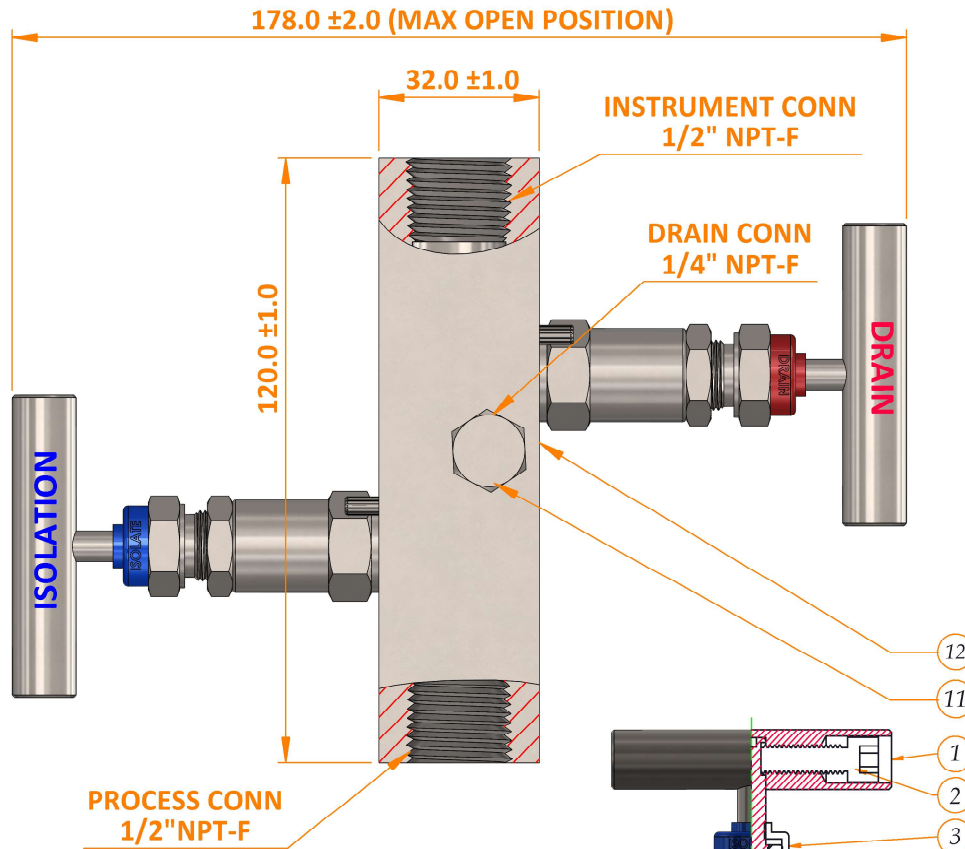


REV	DATE	DESCRIPTION	DRAWN	APPROVED
00	06/02/19	Drawing Issued	AUN	MRD



12	VALVE BODY	ASTM A182 F316	1
11	PLUG	ASTM A276 Gr316	1
10	PACKING	GFT	2
9B	BALL TIP	ASTM A276 Gr316	2
9A	SPINDLE TIP	ASTM A276 Gr316	2
8	SPINDLE	ASTM A276 Gr316	2
7	PACKING WASHER	ASTM A276 Gr316	4
6	BONNET	ASTM A276 Gr316	2
5	LOCK NUT	SS	2
4	CHECK NUT	ASTM A276 Gr316	2
3	DUST CAP	PVC	2
2	HANDLE SCREW	SS	2
1	HANDLE	SS	2
ITEM NO.	PART NUMBER	MATERIAL	QTY.

Data Sheet

Connections:

Process : 1/2"NPT-F

Instrument : 1/2" NPT-F

Drain : 1/4" NPT-F

M.A.W.P. : 690 bar @ 38°C

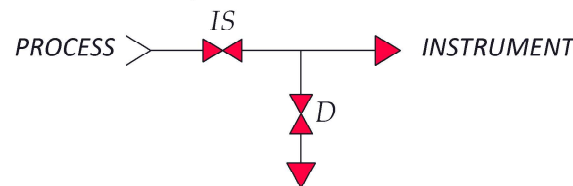
Hydro-Testing(Shell) Pressure: 1035 bar

Hydrp-Testing(Seat) Pressure: 760 barg

Pneumatic(N2) Test Pressue: 70Kg/cm2

Testing in Accordance with MSS-SP-99

Screwed Bonnet Design



2 VALVE MANIFOLD- REMOTE MOUNT (F XF) 1/2" NPT

Working Pressure - 10,000 Psi

All Dimensions are in mm. Unless otherwise stated.

Material : SS316

DRAWING NO.:-

TTS-306T-22BB11

TTS

SHT.	OF	REV.	Drawn/Date	AUN - 06/02/2019
01	01	00	Checked/Date	MRD - 06/02/2019
			Approved/Date	JDP - 06/02/2019
			SCALE	NTS

* All dimensions are in mm. Dimensions for reference only and are subject to change without Prior Notice.
 * This document is the property of TTS Valve Technologies Sdn. Bhd.No exploitation or release of any text
 * Contained herein or relating to this document is permitted in any form without the written consent of TTS.